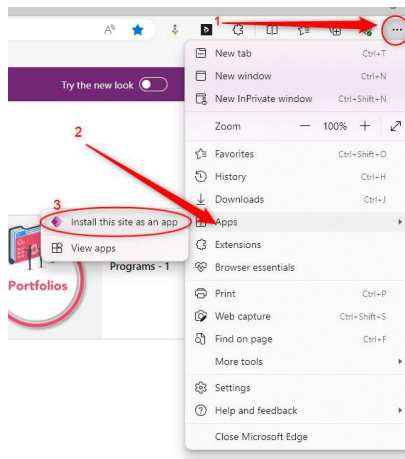


Add the BrightWork 365 App as a Desktop App

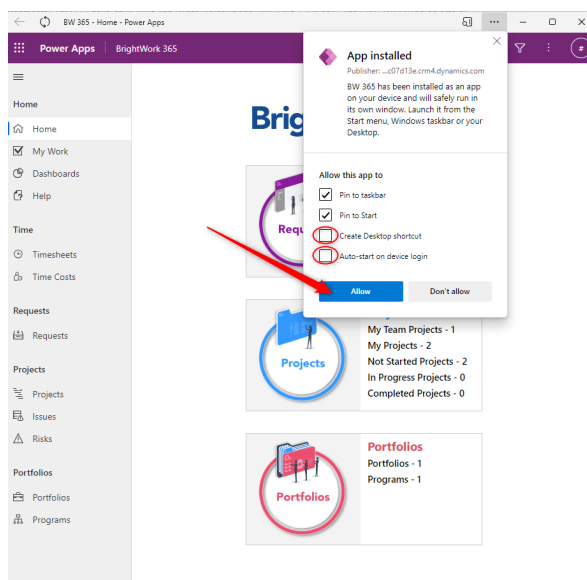
The BrightWork 365 app can be added as a desktop app via tools included with the Microsoft Edge and Google Chrome browsers.

Microsoft Edge

1. Open your BrightWork 365 application using Microsoft Edge and select the ellipsis on the top right of the browser.
2. Select **Apps**.
3. Select **Install this site as an app**.



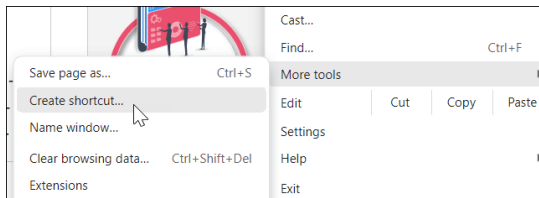
4. In the pop up that appears enter a name for the desktop app, i.e., BrightWork 365.
5. Select **Create Desktop shortcut**, and **Auto-start on device login** if needed.



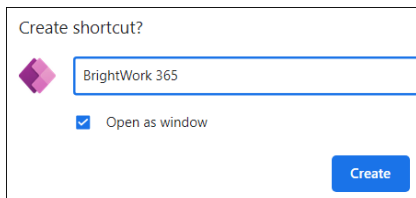
6. The BrightWork 365 app will now be available as a desktop app.

Google Chrome

1. Open your BrightWork 365 application using Google Chrome and select the ellipsis on the top right of the browser.
2. Click **More tools > Create shortcut**.



3. Enter a name for the shortcut, i.e., BrightWork 365, select **Open as window**, and click **Create**.



4. Choose to pin the app to your taskbar.
5. The BrightWork 365 app will now be available as a desktop app.